

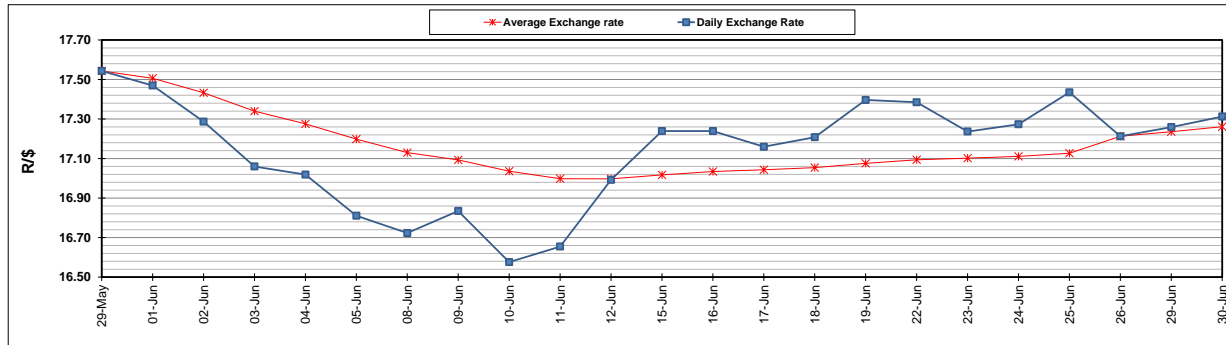
	PETROL 95 ULP	PETROL 93 ULP & LRP	DIESEL 0.05%	DIESEL 0.005%	ILL. PAR.
GAUTENG PUMP PRICE (SA c/l) AS FROM 01/07/2020	1,512.000	1,483.000	-	-	-
WHOLESALE PRICE (SA c/l) AS FROM 01/07/2020	-	-	1,303.560	1,307.960	703.828
SINGLE NATIONAL MAXIMUM RETAIL PRICE	-	-	-	-	882.000
BASIC FUEL PRICE - 30/06/2020 (SA c/l)	568.755	555.211	591.005	595.193	523.944
PRESS RELEASE CONTRIBUTION TO BFP 26/06/2020 - 30/06/2020 (SA c/l)	392.770	382.770	379.630	388.030	285.128
UNIT OVER/(UNDER) RECOVERY - 30/06/2020 (SA c/l)	(175.985)	(172.441)	(211.375)	(207.163)	(238.816)
AVERAGE BASIC FUEL PRICE 26/06/2020 - 30/06/2020	556.403	542.634	581.583	585.360	515.409
AVERAGE UNIT OVER/(UNDER) RECOVERY 26/06/2020 - 30/06/2020	(163.633)	(159.864)	(201.953)	(197.330)	(230.281)

ANALYSIS MOVEMENT OF AVERAGE OVER/(UNDER) RECOVERY

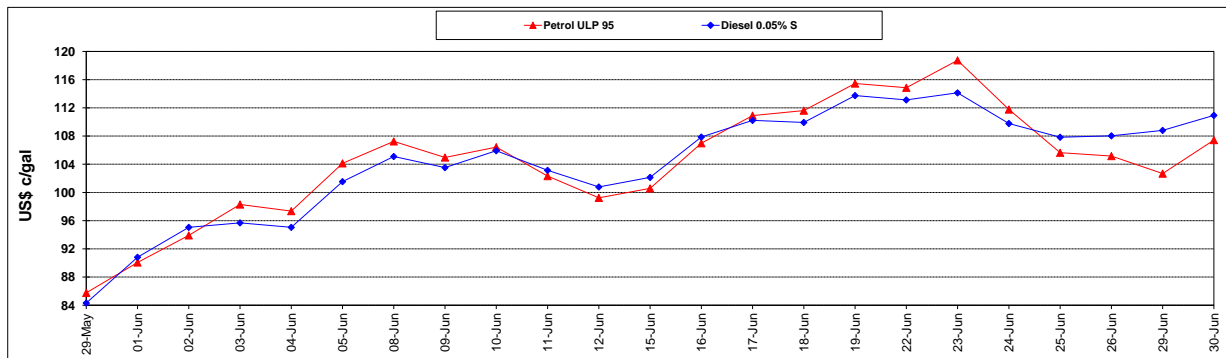
	PETROL 95	PETROL 93	DIESEL 0.05%	DIESEL 0.005%	ILL. PAR.
- MOVEMENT IN INTERNATIONAL PRODUCT PRICES	(159.307)	(155.645)	(197.431)	(192.779)	(226.274)
- MOVEMENT IN EXCHANGE RATE	(4.326)	(4.219)	(4.522)	(4.551)	(4.007)
AVERAGE UNIT OVER/(UNDER) RECOVERY 26/06/2020 - 30/06/2020	(163.633)	(159.864)	(201.953)	(197.330)	(230.281)

R/\$ EXCHANGE RATE - (R/\$17.3125 - 30/06/2020)

EXCHANGE RATE USED IN BASIC FUEL PRICE



INTERNATIONAL PRODUCT PRICES OF BASKET USED IN BASIC FUEL PRICE



BASIC FUEL PRICE IN SA CENTS PER LITRE

